

PARTS CATALOG

Shift Tray-C1

Canon

Mar 17 2004

PREFACE

This Parts Catalog contains listings of parts used

Diagrams are provided with the listings to aid the service technician in identifying clearly, the item to be ordered.

Whenever ordering parts, consult this Parts Catalog for all of the information pertaining to each item. Be sure to include, in the Parts Request, the full item description, the item part number, and the quantity.

COPYRIGHT (C) 1999 CANON INC.

Use of this manual should be strictly supervised to avoid disclosure of confidential information.

Contents

Parts List Index

Shift Tray-C1	1-1
---------------------	-----

Shift Tray-C1

Q10	SHIFT TRAY ASSEMBLY	2-1
Q20	SHIFT DRIVE ASSEMBLY	2-3
QB	LIST OF CONNECTORS	2-5

NUMERICAL INDEX

Shift Tray-C1

PARTS NUMBER	FIGURE & KEY NO.	PARTS NUMBER	FIGURE & KEY NO.	PARTS NUMBER	FIGURE & KEY NO.
FA9-2112-000	Q20 - 8	NPN	QB - J208	XB4-5400-807	Q20 - 502
FB3-7307-000	Q10 - 19	PCB	QB - J101	XB4-5400-809	Q10 - 505
FB4-8153-000	Q20 - 18	PCB	QB - J102	XB4-5401-606	Q10 - 506
FB5-7564-000	Q10 - 9	PCB	QB - J103	XD2-1100-322	Q20 - 503
FB5-7568-000	Q10 - 10	PCB	QB - J104	XD2-1100-502	Q20 - 504
FB5-7569-000	Q10 - 4	PCB	QB - J105	XD2-1100-642	Q20 - 505
FB5-7573-000	Q10 - 5	PCB	QB - J106	XD2-2300-240	Q20 - 508
FB5-7579-000	Q10 - 17	SYS	QB - J201	XD2-2300-302	Q20 - 509
FB5-7580-000	Q10 - 6	SYS	QB - J202	XD3-2160-082	Q20 - 506
FB5-7585-000	Q10 - 22	VS1-0842-003	QB - J203	XD3-2200-142	Q20 - 507
FB5-7596-000	Q20 - 14	VS1-0842-003	QB - J204	XD9-0204-000	Q10 - 8
FB5-7597-000	Q20 - 15	VS1-0842-003	QB - J206	XG9-0334-000	Q20 - 6
FC5-5068-000	Q10 - 1	VS1-0842-004	QB - J205	XG9-0414-000	Q20 - 7
FC5-5074-000	Q20 - 9	VS1-0842-006	QB - J103		
FC5-5076-000	Q20 - 3	VS1-5057-004	Q10 - 15		
FC5-5080-000	Q20 - 13	VS1-5057-004	QB - J205		
FC5-6957-000	Q20 - 21	VS1-5824-003	QB - J207		
FG6-6835-000	Q10 - 21	VS1-5824-003	QB - J208		
FG6-6836-000	Q10 - 20	VS1-5824-004	QB - J106		
FG6-6841-000	Q10 - 14	VS1-5824-004	QB - J205		
FG6-6845-000	Q10 - 25	VS1-5824-007	QB - J104		
FG6-6846-000	Q20 - 20	VS1-6314-010	QB - J202		
FH6-1829-000	Q10 - 11	VS1-6321-010	QB - J102		
FH7-7462-000	Q10 - 12	VS1-6534-004	QB - J101		
FL2-0494-000	Q20 - 4	VS1-6534-004	QB - J201		
FL2-0496-000	Q20 - 16	WG8-5485-000	Q10 - 7		
FM2-0477-000	Q20 -	WS3-5358-000	QB - J104		
FS5-6531-000	Q20 - 19	WS3-5358-000	QB - J106		
FS6-2541-000	Q20 - 17	WS3-5358-000	QB - J205		
FS6-2556-000	Q10 - 23	WS3-5358-000	QB - J207		
FS7-0906-000	Q10 - 18	WS3-5358-000	QB - J208		
FS7-2539-000	Q10 - 24	WS3-5658-000	QB - J101		
FS7-2540-000	Q20 - 1	WS3-5658-000	QB - J201		
FU5-0279-000	Q20 - 5	WT2-5169-000	Q10 - 16		
FU5-0280-000	Q20 - 10	XA9-0265-000	Q10 - 13		
FU5-0281-000	Q20 - 11	XA9-0265-000	Q20 - 2		
FU5-0282-000	Q20 - 12	XA9-0732-000	Q10 - 2		
NPN	Q10 -	XA9-0871-000	Q10 - 3		
NPN	QB -	XB1-2301-606	Q10 - 501		
NPN	QB - J105	XB1-2400-606	Q10 - 503		
NPN	QB - J203	XB1-2400-607	Q20 - 501		
NPN	QB - J204	XB1-2400-607	Q20 - 510		
NPN	QB - J206	XB1-2400-609	Q10 - 504		
NPN	QB - J207	XB4-5400-807	Q10 - 502		

Shift Tray-C1

F26-4101-000JPE00001-

Contents

Q10	SHIFT TRAY ASSEMBLY.....	2-1
Q20	SHIFT DRIVE ASSEMBLY	2-3
QB	LIST OF CONNECTORS.....	2-5

FIGURE Q10 SHIFT TRAY ASSEMBLY

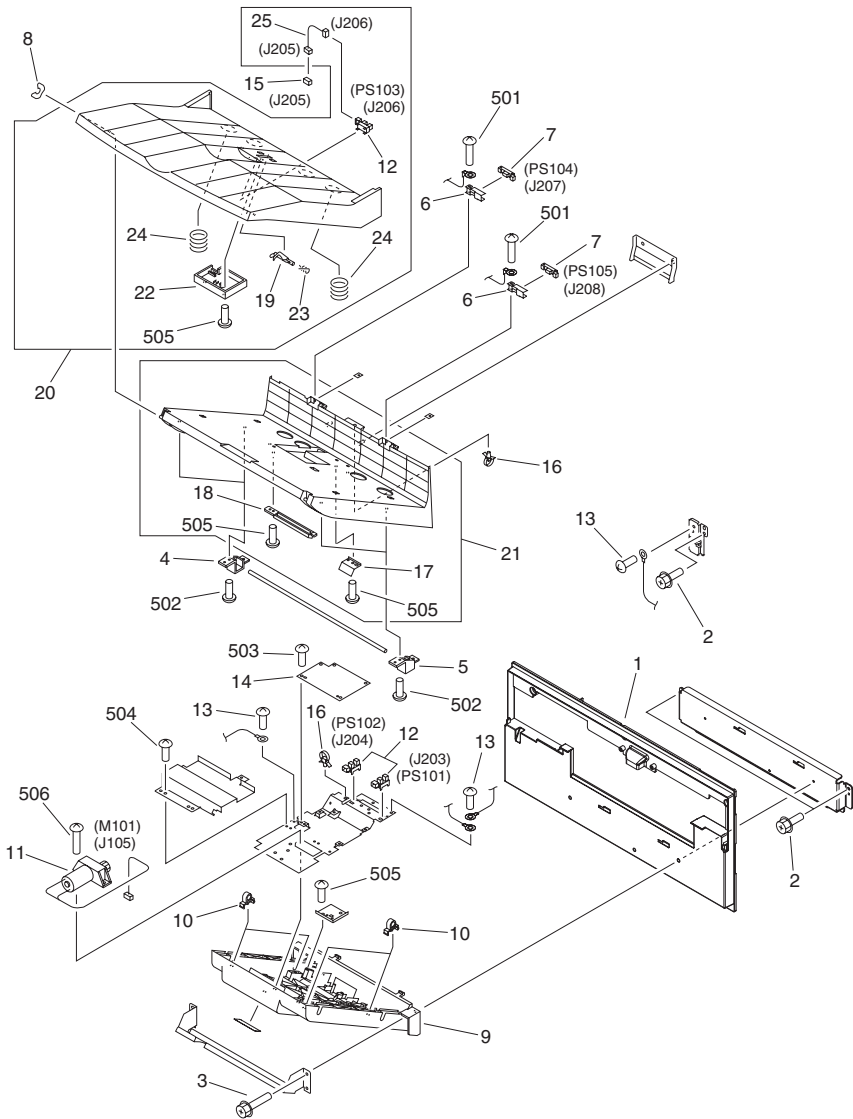
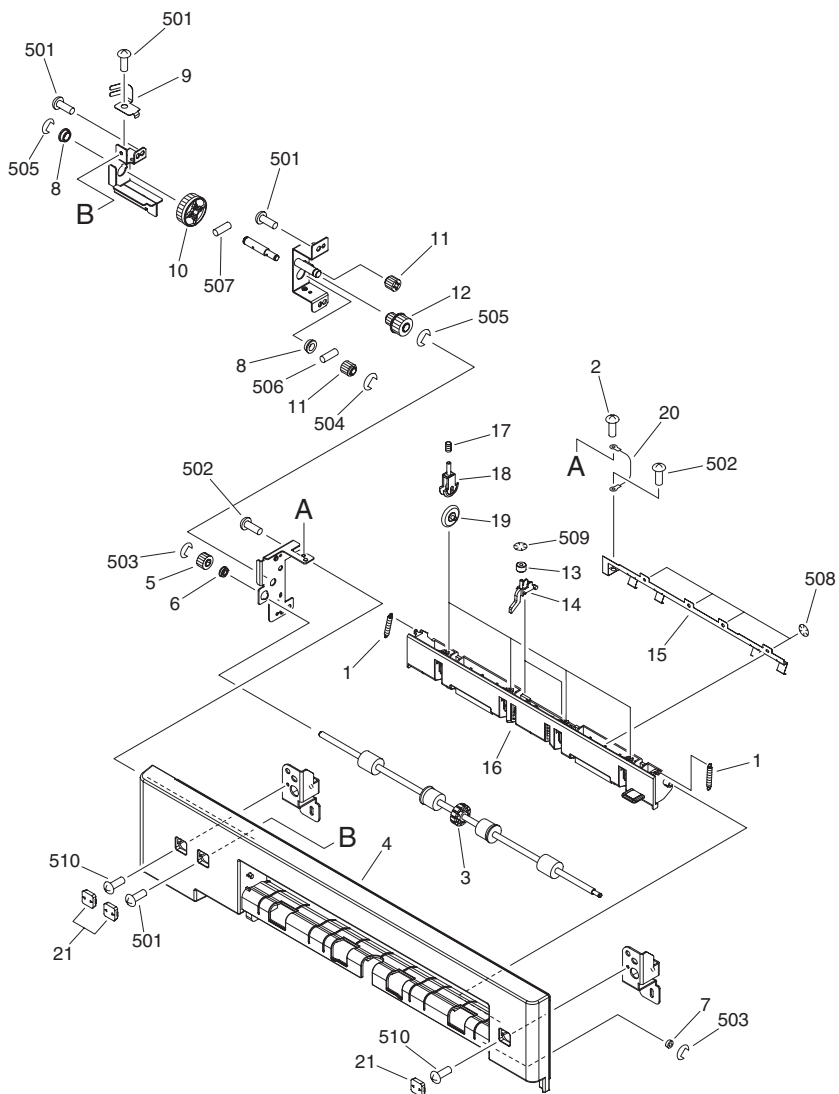


FIGURE & KEY NO.	PARTS NUMBER	R A N K	Q'TY	DESCRIPTION	SERIAL NUMBER/ REMARKS	S V C
Fig.Q10	NPN		RF	SHIFT TRAY ASSEMBLY		
1	FC5-5068-000		1	PANEL, SHIFT TRAY		
2	XA9-0732-000		3	SCREW,RS,M4X8		
3	XA9-0871-000		3	SCREW,RS,M4X20		
4	FB5-7569-000		2	BLOCK, SHAFT RETAINING		
5	FB5-7573-000		2	BLOCK, SHAFT RETAINING		
6	FB5-7580-000		2	PLATE, FULL DETECT GROUNDING		
7	WG8-5485-000		2	IC, GP2A25D, PHOTO-REFLECTOR	PS104,105 J207,208	
8	XD9-0204-000		1	RING, E		
9	FB5-7564-000		1	COVER, LOWER		
10	FB5-7568-000		4	HOLDER, BUSHING		
11	FH6-1829-000		1	MOTOR, DC 24V	M101 J105	
12	FH7-7462-000		3	PHOTO-INTERRUPTER	PS101-103 J203,204,206	
13	XA9-0265-000		3	SCREW,W/WASHER,TRUSS HEAD		
14	FG6-6841-000		1	SHIFT TRAY DRIVER PCB ASSEMBLY		
15	VS1-5057-004		1	CONNECTOR, SNAP TIGHT	J205	
16	WT2-5169-000		1			
17	FB5-7579-000		1	PLATE, SENSOR		
18	FS7-0906-000		1	RACK		
19	FB3-7307-000		1	LEVER, SENSOR		
20	FG6-6836-000		1	TRAY ASSEMBLY		
21	FG6-6835-000		1	TRAY MOUNT ASSEMBLY		
22	FB5-7585-000		1	COVER, SENSOR		
23	FS6-2556-000		1	SPRING, TORSION		
24	FS7-2539-000		2	SPRING, COMPRESSION		
25	FG6-6845-000		1	CABLE, PAPER SENSOR	J205,206	
501	XB1-2301-606		AR	SCREW,MACH.,TRUSS HEAD,M3X16		
502	XB4-5400-807		AR	SCREW,P,M4X8		
503	XB1-2400-606		AR	SCREW,MACH.,TRUSS HEAD,M4X6		
504	XB1-2400-609		AR	SCREW,MACH.,TRUSS HEAD,M4X6		
505	XB4-5400-809		AR	SCREW,P,M4X8		
506	XB4-5401-606		AR	SCREW,P,M4X16		

FIGURE Q20 SHIFT DRIVE ASSEMBLY



NOTE : This assembly does not include the parts shown with key No. 21 and 510.
 注 : このユニットにKey No. 21, 510の部品は含まれません。

FIGURE & KEY NO.	PARTS NUMBER	R A N K	Q'TY	DESCRIPTION	SERIAL NUMBER/ REMARKS	S V C
Fig.Q20	FM2-0477-000		1	SHIFT DRIVE ASSEMBLY		
1	FS7-2540-000		2	SPRING, TENSION		
2	XA9-0265-000		1	SCREW,W/WASHER,TRUSS HEAD		
3	FC5-5076-000		1	ROLLER, SHIFT PAPER DELIVERY		
4	FL2-0494-000		1	PANEL, SHIFT PAPER DELIVERY		
5	FU5-0279-000		1	GEAR, 17T		
6	XG9-0334-000		1	BEARING, BALL		
7	XG9-0414-000		1	BEARING, BALL		
8	FA9-2112-000		2	BUSHING		
9	FC5-5074-000		1	PLATE, SHIFT GROUNDING		
10	FU5-0280-000		1	GEAR, 30T		
11	FU5-0281-000		2	GEAR, 24T		
12	FU5-0282-000		1	GEAR, 23T/24T		
13	FC5-5080-000		2	WEIGHT, PAPER DELIVERY		
14	FB5-7596-000		2	ARM, LIMIT		
15	FB5-7597-000		1	PLATE, GROUNDING		
16	FL2-0496-000		1	GUIDE, SHIFT UPPER		
17	FS6-2541-000		4	SPRING, COMPRESSION		
18	FB4-8153-000		4	HOLDER, ROLLER		
19	FS5-6531-000		4	ROLLER		
20	FG6-6846-000		1	CABLE, GROUNDING		
21	FC5-6957-000		3	CAP, BLANKING	SEE NOTE	
501	XB1-2400-607		AR	SCREW,MACH.,TRUSS HEAD,M4X6		
502	XB4-5400-807		AR	SCREW,P,M4X8		
503	XD2-1100-322		AR	RING,E		
504	XD2-1100-502		AR	RING,E		
505	XD2-1100-642		AR	RING,E		
506	XD3-2160-082		AR	PIN,DOWEL		
507	XD3-2200-142		AR	PIN,DOWEL		
508	XD2-2300-242		AR	RING, TOOTHED LOCK		
509	XD2-2300-302		AR	RING,TOOTHED LOCK		
510	XB1-2400-607		AR	SCREW,MACH.,TRUSS HEAD,M4X6	SEE NOTE	

FIGURE QB

LIST OF CONNECTORS

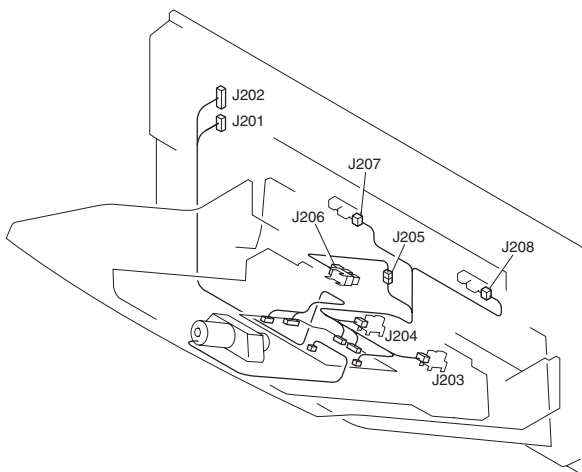


FIGURE & KEY NO.	PARTS NUMBER	RANK	Q'TY	DESCRIPTION	SERIAL NUMBER/REMARKS	SVC
Fig.QB	NPN		RF	LIST OF CONNECTORS		
J101	PCB			SHIFT TRAY DRIVER		
J101	VS1-6534-004		1	CONNECTOR, 4P, FEMALE		
J101	WS3-5658-000		1	SOCKET CONTACT		
J102	PCB			SHIFT TRAY DRIVER		
J102	VS1-6321-010		1	CONNECTOR, 10P, FEMALE		
J103	PCB			SHIFT TRAY DRIVER		
J103	VS1-0842-006		1	CONNECTOR, 6P, FEMALE		
J104	PCB			SHIFT TRAY DRIVER		
J104	VS1-5824-007		1	CONNECTOR, 7P, FEMALE		
J104	WS3-5358-000		1	SOCKET CONTACT, 22-26AWG		
J105	PCB			SHIFT TRAY DRIVER		
J105	NPN			SHIFT MOTOR	M101	
J106	PCB			SHIFT TRAY DRIVER		
J106	VS1-5824-004		1	CONNECTOR, 4P, FEMALE		
J106	WS3-5358-000		1	SOCKET CONTACT, 22-26AWG		
J201	SYS			TO COPIER		
J201	VS1-6534-004		1	CONNECTOR, 4P, FEMALE		
J201	WS3-5658-000		1	SOCKET CONTACT		
J202	SYS			TO COPIER		
J202	VS1-6314-010		1	CONNECTOR, 10P, FEMALE		
J203	NPN			SHIFT TRAY HP SENSOR, FRONT	PS101	
J203	VS1-0842-003		1	CONNECTOR, 3P, FEMALE		
J204	NPN			SHIFT TRAY HP SENSOR, REAR	PS102	
J204	VS1-0842-003		1	CONNECTOR, 3P, FEMALE		
J205	VS1-0842-004		1	CONNECTOR, 4P, FEMALE		
J205	VS1-5824-004		1	CONNECTOR, 4P, FEMALE		
J205	WS3-5358-000		1	SOCKET CONTACT, 22-26AWG		
J205	VS1-5057-004		1	CONNECTOR, SNAP TIGHT		
J206	NPN			PAPER EXIST DETECT SENSOR	PS103	
J206	VS1-0842-003		1	CONNECTOR, 3P, FEMALE		
J207	NPN			PAPER FULL DETECT SENSOR, REAR	PS104	

FIGURE & KEY NO.	PARTS NUMBER	RANK	Q'TY	DESCRIPTION	SERIAL NUMBER/REMARKS	SVC
J207	VS1-5824-003		1	CONNECTOR, 3P, FEMALE	PS105	
J207	WS3-5358-000		1	SOCKET CONTACT, 22-26AWG		
J208	NPN			PAPER FULL DETECT SENSOR,FRONT		
J208	VS1-5824-003		1	CONNECTOR, 3P, FEMALE		
J208	WS3-5358-000		1	SOCKET CONTACT, 22-26AWG		

Prepared by
OFFICE IMAGING PRODUCTS QUALITY ASSURANCE CENTER
CANON INC.

Canon